

BIL-T

Bilancino telescopico di sollevamento Spreader bar

- Il sistema di chiusura maschio-femmina permette molteplici configurazioni. Da usare singolarmente o in combinazione
- The male and female interlocking system permits multiple configurations



COD. ART. MODEL	LUNGHEZZA MIN. (mm) LENGTH MIN. (mm)	LUNGHEZZA MAX (mm) LENGTH MAX (mm)	PORTATA MIN. (t) CAPACITY MIN. (t)	PORTATA MAX (t) CAPACITY MAX (t)
BIL-8/15T	1220	3049	8	15
BIL-7/35T	2057	10543	7	35
BIL-10/70T	2057	10723	10	70
BIL-27/110T	2057	10543	27	110

BIL



Bilancini con gancio girevole di sicurezza Lifting spreader bars with rotating safety hooks

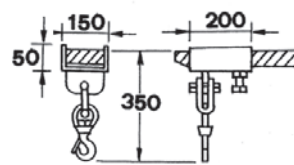
- Studiati per essere impiegati in molteplici usi, il bilancino viene realizzato anche con misure a richiesta
- Designed for a variety of uses, is also available in sizes according to customer request

COD. ART. MODEL	PORTATA (Kg) CAPACITY (Kg)	DIMENSIONI (mm) DIOMENSIONS (mm)	PESO (Kg) WEIGHT (Kg)
BIL-10	1000	a richiesta	in base alle dimensioni
BIL-15	1500		
BIL-20	2000	on demand	depending on dimensions
BIL-30	3000		
BIL-50	5000		
BIL-80	8000		
BIL-99	10000		
BIL-200	20000		

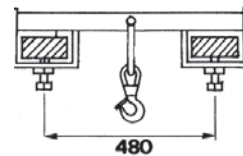
MINF



Manicotto inforcabile con gancio girevole Fork mounted hooks



MINF-1
Inforcabile tramite 1 forca
Used with one fork



MINF-2 / MINF-3
Inforcabile tramite 2 forche
Used with two forks

COD. ART. MODEL	PORTATA (Kg) CAPACITY (Kg)
MINF-1.20	2000
MINF-2.20	2000
MINF-2.50	5000
MINF-3.20	2000
MINF-3.50	5000

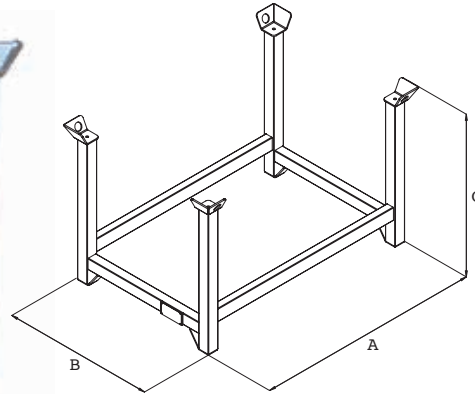
PPE



Porta puntelli Stacking stillage

- Porta puntelli dimensioni:
1200x800x750 h mm / 1500x1000x750 h mm

- Stacking stillage dimensions:
1200x800x750 h mm / 1500x1000x750 h mm



COD. ART. MODEL	DIMENSIONI - DIMENSIONS (mm)			PORTATA (Kg) CAPACITY (Kg)	PESO (Kg) WEIGHT (Kg)
	A	B	C		
PPE-12	1200	800	750	1000	30
PPE-15	1500	1000	750	1000	32
PPE-12ZN	1200	800	750	1000	35
PPE-15ZN	1500	1000	750	1000	36

SGM/SGT 350

Segatrice per legno con disco Ø 350 mm
Bench saw for wood with blade Ø 350 mm



SGM/SGT 450

Segatrice per legno con disco Ø 450 mm
Bench saw for wood with blade Ø 450 mm

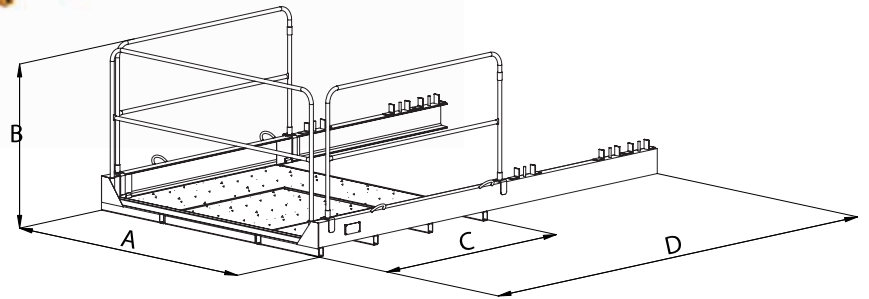


COD. ART. MODEL	DIMENSIONI ESTERNE (mm) EXTERNAL DIMENSION (mm)	PESO (Kg) WEIGHT (Kg)	MOTORI MOTORS	FREQUENZA FREQUENCY	VELOCITÀ SPEED	LAMA BLADE	H. MAX. TAGLIO CUT HEIGHT
SGM/SGT 350	1000x740x1000	68	HP 2,5 MEC 80 Kw 1,85 230 MONOFASE HP 2,5 MEC 80 Kw 1,85 400 TRIFASE	50Hz	2800 giri/min	Ø 350 mm	125 mm
SGM/SGT 450	1000x700x1110	97	HP 3 MEC 90 Kw 2,20 230 MONOFASE HP 3 MEC 90 Kw 2,20 400 TRIFASE	50Hz	2800 giri/min	Ø 450 mm	170 mm

PIA

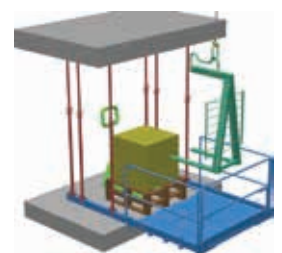
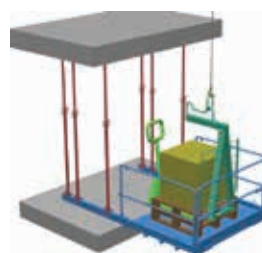
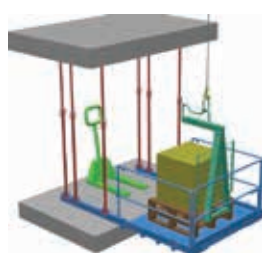
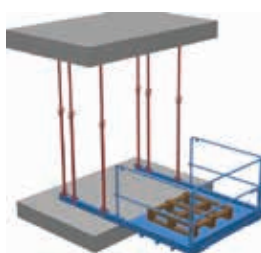
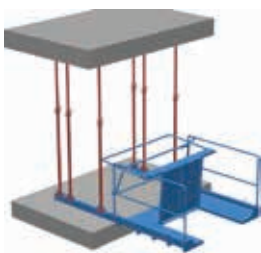
Piattaforma di carico per gru Loading crane platform

Su richiesta altre dimensioni e portate
On request other dimensions and capacities



COD. ART. MODEL	CAPACITA' (Lt) CAPACITY (Lt)	DIMENSIONI - DIMENSIONS (mm)				PESO (Kg) WEIGHT (Kg)
		A	B	C	D	
PIA-15	1500	1910	960	1650	3002	217
PIA-15B CON BOTOLA WHIT HATCH	1500	1910	930	1650	3002	237
PIA-20	2000	1910	1060	1650	3002	241
PIA-20B CON BOTOLA WHIT HATCH	2000	1910	1060	1650	3002	266

DISPONIBILE ANCHE
ALSO AVAILABLE



CF



Casseri per finestre zincati
Zinc-plated formworks for windows



COD. ART. MODEL	LARGHEZZA (mm) WIDTH (mm)	REGOLAZIONE (mm) ADJUSTMENT (mm)
CF-20ZN	200	900-1350
CF-25ZN	250	900-1350
CF-30ZN	300	900-1350
CF-35ZN	350	900-1350
CF-40ZN	400	900-1350

CM



Contenitore per acqua
Water box

- Utilizzato per immergere laterizi prima della posa
- Used to immerse bricks before the placing



COD. ART. MODEL	CAPACITA' (Lt) CAPACITY (Lt)	DIMENSIONI UTILI - USEFUL DIMENSIONS (mm)			PESO (Kg) WEIGHT (Kg)
		A	B	C	
CM-10	1960	1500	1500	1300	250

BOX-L

Ufficio mobile da cantiere Mobile office for construction site

- Ufficio mobile da cantiere realizzato in lamiera
- Dimensioni 1500x1500x2200 h mm
- Piano di lettura interno inclinato per direzioni lavori
- Possibilità di sollevamento con catena a quattro bracci, porta laterale per l'accesso e finestre in plexiglas
- *Mobile office in metal steel*
- *Dimensions 1500x1500x2200 h mm*
- *Possibility to move with four chains, entrance door and plexiglas windows*



CP

Cisterna Tank

- Cisterne in polietilene ad alta densità con stabilizzazione UV
- Capacità 1055 Lt. con apertura di carico da mm 150
- Valvola di fondo e telaio in tubi di acciaio zincato
- Non riempire con prodotti la cui temperatura supera i 60°C
- Dimensioni 1000x1200x1150 h mm
- *Tanks in high-density UV-stabilized polyethylene made by blowing with capacity 1055 Lt., with 150 mm load opening*
- *High-density UV-stabilized bottom valve and galvanized steel tubular frame*
- *Do not fill with products whose temperature exceeds 60°C*
- *Dimensions 1000x1200x1150 h mm*

